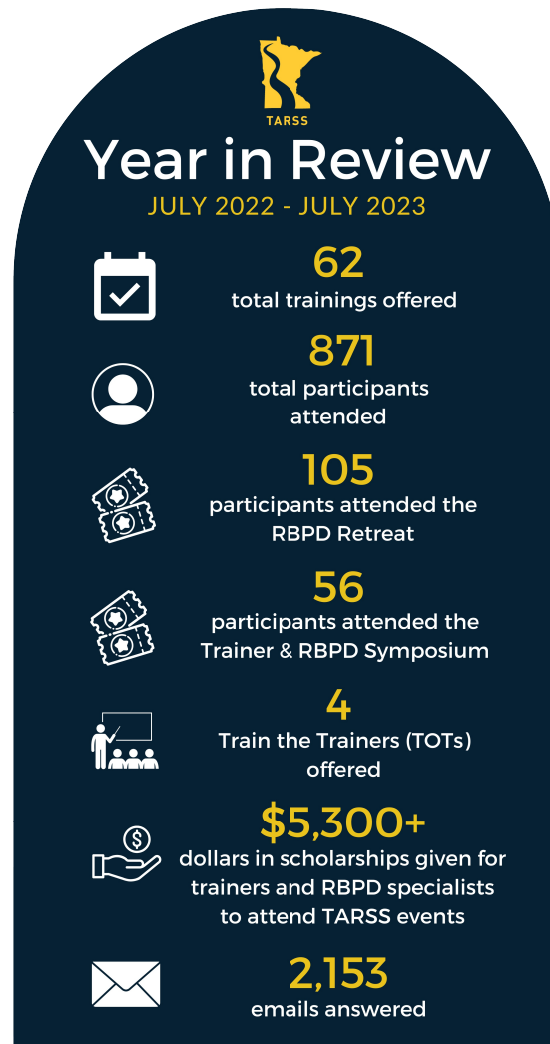


Forward to a Friend Activity						
	Total	Unique				
Clicked 'Forward' link	0	0				
Forward Activity	0	0				
New Subscribers	0	0				



A message from the TARSS team

Last month, we wrapped up our second fiscal year as the home of the TARSS program. We are so proud to have served more than a thousand participants through our trainings and events this past year. Take a look at the infographic below for more information about what we've been up to. And thank you to all our colleagues in the trainer and RBPB specialist space for making 2022-23 an exciting year full of learning and growth!



We're hiring a curriculum specialist!

The Center for Early Education and Development (CEED) is seeking applicants with extensive experience working in childcare programming, especially in the areas of training and curriculum development. The role of curriculum specialist will work with the TARSS team and the Minnesota Department of Human Services (DHS), Child Development Services (CDS) Division personnel to organize, coordinate, and maintain the DHS curriculum library. This individual will also develop and lead additional projects serving the trainer and RBPB specialist community, especially in the areas of course writing and course development.

[View the full job description and apply online](#) by searching for job opening number 357306. Need help with your application? Email us at tarss@umn.edu.

Trauma trainings

The Center for Inclusive Child Care offers FREE self-study modules on trauma!

[Trauma Responsive/Healing Centered Strategies Part 1: Relationships And Environments](#)

Explore a relationship based approach in caregiving environments with young children that have been impacted by trauma. Define early childhood trauma and describe the impact on development and relationships. Identify trauma triggers and elements of healing centered environments.

¡Y en español!

[Estrategias centradas en la respuesta/curación del trauma Parte 1: Relaciones y desarrollo](#)

Explorar un enfoque basado en las relaciones en entornos de cuidado con niños pequeños que han sido impactados por trauma. Definir trauma de la primera infancia y describir el impacto en el desarrollo y las relaciones. Identificar los desencadenantes del trauma y los elementos de entornos centrados en la sanación.

[Trauma Responsive/Healing Centered Strategies Part 2: Self-Regulation For Children And Adults](#)

Describe the development of children's regulation systems, including the concept of co-regulation. Explore strategies to support the development of regulation in young children who have experienced trauma. Explain how working with traumatized children and families contributes to compassion fatigue. Plan ways to reduce or address the impact of compassion fatigue.

Train for Child Care Aware

Child Care Aware of Minnesota is recruiting trainers across the state! Learn more about becoming a trainer for Child Care Aware of MN by checking out their [web page](#), emailing becomeatrainer@childcareawaremn.org, or reaching out to your local [Professional Development Coordinator](#) to learn more about training for your local Child Care Aware district.

Preparing to train and write courses for online delivery

In order to write online courses and train on them, Trainers and Course Writers must complete 16 clock hours of online training. The online training requirement applies to all Trainer types EXCEPT State Partner Trainer and Higher Education Trainer.

Trainings that fulfill the requirement include:

- [Learning to Teach Online](#) through Coursera
 - Trainer must send a certificate of completion to support@mncpd.org.
- [Good Teaching Is Good Teaching Anytime](#) through Eager-to-Learn
 - Online registration is available using [Develop](#)'s Search for Training tool.
- One semester credit (15 hours) will be accepted for courses related to the design and delivery of online learning opportunities.
 - Course must be verified with an official transcript submitted as part of the Individual Membership application in Develop.

To learn more about Trainer and Course Writer approval, check out [these resources from Achieve](#).

A graphic featuring a stylized window with a blue header and three dots on the left. Inside the window, the text "Upcoming Trainings" is written in a large, elegant, dark red script font. The entire graphic is set against a solid yellow background.

Upcoming Trainings

Introduction to Trainer Competencies and Observation

Cost: free
2 clock hours, self-paced online

This free course is for early childhood professionals who wish to become trainers or for trainers who are renewing their membership. Participants will learn about Minnesota's Knowledge and Competency Framework for Trainers. They will discover the benefits of self-assessment as well as observation and improvement tools. The course will also explore the links between competencies and observation items.

[Learn more and register](#)

Course Writer Membership required courses

[Minnesota Course Writer Orientation Module](#)

Cost: Free

This free course is for early education professionals with a Career Lattice Step 9d or higher who would like to become course writers. Course writers write approved trainings in the early education field.

[Register](#)

[Course Writer: Design Skills](#)

Cost: \$100

This 3-hour course is a live online event. It is required for Course Writer Membership.

[Learn more and register](#)

[Course Writer: Crafting and Drafting a Course](#)

Cost: \$100

This three-hour course is a live online event. It is required for Course Writer Membership.

[Learn more and register](#)

Trainer Orientations

[Minnesota Trainer Orientation Module 1](#) and [Module 2](#)

Cost: Free

2 clock hours, self-paced online, no prerequisites

These free, on-demand courses are for individuals who would like to become an approved trainer in Minnesota and for those who are renewing their Trainer Membership.

[Learn more and register for Module 1](#)

[Learn more and register for Module 2](#)

Adult Learning Modules

Adult Learning Modules 1 and 2 help trainers meet the 12 hours of training about adult learning required for trainer approval in Minnesota. You must complete both modules to meet this requirement.

[Adult Learning Module 1: Delivery Skills](#) and [Module 2: Design Skills](#)

- Offered in person or online with live Zoom sessions
- 6 hours Develop-approved in person (8 hours online)
- Cost: Live or work in Minnesota: \$100. Professionals outside of Minnesota: \$200

[Learn more and register for Module 1](#)

[Learn more and register for Module 2](#)

The [Child Care State Capacity Building Center](#), part of the U.S. Health and Human Services, offers a number of downloadable resources including the [Office of Child Care Spanish Language Glossary](#).

- [The Power of Language: How the Codes We Use to Think, Speak, and Live Transform Our Minds](#) (Viorica Marian)
- [Place Matters: The Environment We Create Shapes the Foundations of Healthy Development](#) (Harvard University Center on the Developing Child)
- [Impact Players: How to Take the Lead, Play Bigger, and Multiply Your Impact](#) (Liz Wiseman)

Get in touch! Email us at tarss@umn.edu or call 612-624-5708.

Banner photo credit: Lake Itasca, headwaters of the Mississippi River, by [Kent Landerholm](#), [CC BY-NC 2.0](#)

This email was sent to selected CEED email lists by Center for Early Education and Development, 51 E. River Parkway, Suite 201, Minneapolis, MN, 55455, USA.

[unsubscribe from this list](#) | [mass email privacy statement](#)